


Tests [Edit Test](#)

 Tests
  Groups
  Links

Primary 3 Science (Term 2) - Henry Park

 Duplicate

 Print

 Delete

 Assign Test

Test Introduction

[+ Add Introduction](#)

32 Questions (38 Points)

Question Bank: 19,439 Questions 

Test Questions

1 Test Assignment

Question 1

Primary 3 Science » Primary 3 Science (Term 2)

2 pts

Term 2 Paper 1

Section A : (15 x 2 marks = 30 marks)

For each question from 1 to 15, four options are given. One of them is the correct answer. Make your choice.

Nicole observed four things, Q, R, S and T, in her kitchen for a month. She recorded her observations in the table below.

Thing	Growth	Movement
Q	grew bigger	moved from the kitchen to the hall by itself
R	no change in size	could not move on its own
S	no change in size	moved when the button on its body was pressed
T	grew bigger in water and shrank back to its original size when removed from water	could not move on its own

Which one of the following is a living thing?

- A) Q
 B) R
 C) S
 D) T

Question Type: Multiple Choice

Randomize Answers: No

Date Added: Tue 31st Mar 2020
 Last Modified: Sat 4th Apr 2020
 QID#: 19,357,810

[Answers](#) | [Edit](#) | [Duplicate](#) | [Used In](#) | [Reorder](#)

[Remove From Test](#)

Question 2

Primary 3 Science » Primary 3 Science (Term 2)

2 pts

Marilyn wants to find out if animal Z is an amphibian.
 Which one of the following ways would help Marilyn confirm that animal Z is an amphibian?

- A) Check if animal Z swims.
- B) Check if animal Z lays eggs.
- C) Check if animal Z lives on land.
- ✓ D) Check if animal Z has moist skin.

Question Type: Multiple Choice
 Randomize Answers: No
 Date Added: Tue 31st Mar 2020
 Last Modified: N/A
 QID#: 19,357,854

[Answers](#) | [Edit](#) | [Duplicate](#) | [Used In](#) | [Reorder](#)

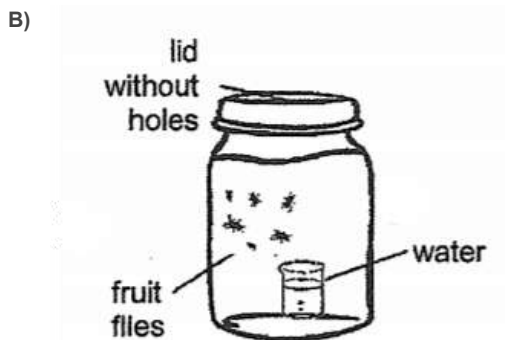
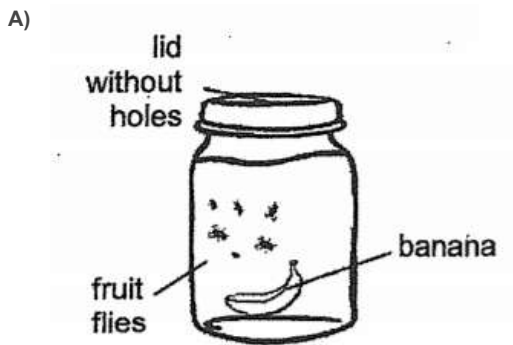
[Remove From Test](#)

Question 3

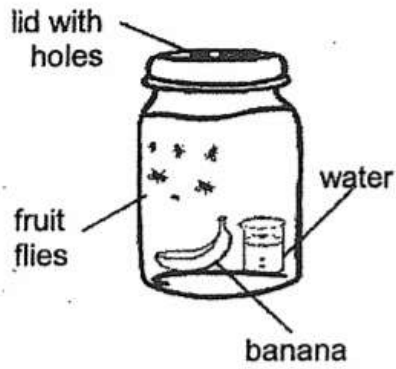
Primary 3 Science » Primary 3 Science (Term 2)

2 pts

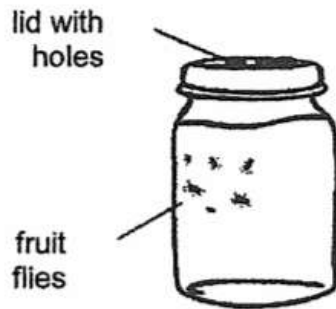
In which one of the following set-ups would the fruit flies live the longest?



✓ C)



D)



Question Type: Multiple Choice
 Randomize Answers: No
 Date Added: Tue 31st Mar 2020
 Last Modified: N/A
 QID#: 19,358,034

[Answers](#) | [Edit](#) | [Duplicate](#) | [Used In](#) | [Reorder](#)

[Remove From Test](#)

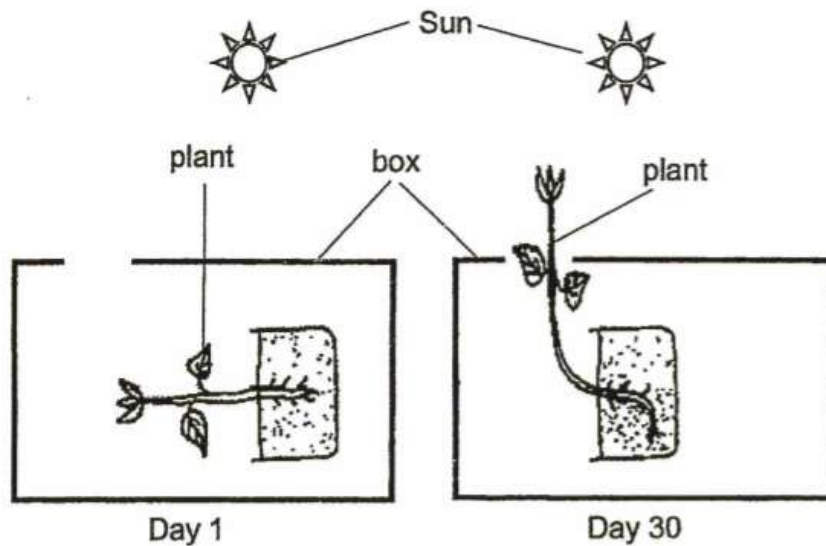
Question 4

Primary 3 Science » Primary 3 Science (Term 2)

2 pts

James wanted to carry out an experiment using a plant.

On Day 1, he placed the plant in a box as shown in the diagram below. On Day 30, the direction of the stem of the same plant had changed as shown below.



Based on this experiment, which of the following characteristics of living things does the change show?

- A Living things grow.
- B Living things reproduce.
- C Living things need air and water to survive.
- D Living things respond to changes around them.

- A) A and C only
- ✓ B) A and D only
- C) B, C and D only
- D) A, B, C and D

Question Type: Multiple Choice
Randomize Answers: No
Date Added: Wed 1st Apr 2020
Last Modified: N/A
QID#: 19,358,182

[Answers](#) | [Edit](#) | [Duplicate](#) | [Used In](#) | [Reorder](#)

[Remove From Test](#)

Question 5

Primary 3 Science » Primary 3 Science (Term 2)

2 pts

3 students observed the animal shown below and were asked to classify it.



They gave their reasons on why the animal was classified as a bird.

- A It has a tail.
- B It has wings.
- C It has feathers.

Which of the above statement(s) is/ are correct?

- A) A only
- ✓ B) C only
- C) A and B only
- D) A and C only

Question Type: Multiple Choice
Randomize Answers: No
Date Added: Wed 1st Apr 2020
Last Modified: N/A
QID#: 19,361,011

[Answers](#) | [Edit](#) | [Duplicate](#) | [Used In](#) | [Reorder](#)

[Remove From Test](#)

Question 6

Primary 3 Science » Primary 3 Science (Term 2)

2 pts

Which one of the following statements is correct?

- A) Fungi can make their own food.
- ✓ B) Fungi need air, water and food to survive.
- C) Fungi only feed on dead matter to survive.
- D) Fungi can only be seen through a microscope.

Question Type: Multiple Choice
Randomize Answers: No
Date Added: Wed 1st Apr 2020
Last Modified: N/A
QID#: 19,361,050

[↗ Answers](#) | [✎ Edit](#) | [📄 Duplicate](#) | [📌 Used In](#) | [⬇ Reorder](#)

[Remove From Test](#)

Question 7

Primary 3 Science » Primary 3 Science (Term 2)

2 pts

Four students in a class were asked to explain why the plant shown below is an adult plant.



Below are their explanations.

Jim : It is an adult plant because it is tall and big.
Ann : It is an adult plant because it produces flowers and fruits.
Kate : It is an adult plant because it has green leaves to make food.
Charles : It is an adult plant because it needs a support to grow upwards.

Which student is correct?

- A) Jim
- ✓ B) Ann
- C) Kate
- D) Charles

Question Type: Multiple Choice
Randomize Answers: No
Date Added: Wed 1st Apr 2020
Last Modified: N/A
QID#: 19,361,168

[↗ Answers](#) | [✎ Edit](#) | [📄 Duplicate](#) | [📌 Used In](#) | [⬇ Reorder](#)

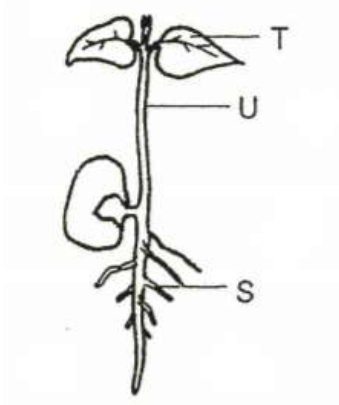
[Remove From Test](#)

Question 8

Primary 3 Science » Primary 3 Science (Term 2)

2 pts

The diagram below shows a young plant.



Which one of the following correctly identifies the parts of the young plant?

	S	T	U
(1)	root	stem	leaf
(2)	shoot	root	stem
(3)	root	leaf	stem
(4)	stem	leaf	root

- A) 1
 B) 2
 ✓ C) 3
 D) 4

Question Type: Multiple Choice
Randomize Answers: No
Date Added: Wed 1st Apr 2020
Last Modified: N/A
QID#: 19,361,600

[Answers](#) | [Edit](#) | [Duplicate](#) | [Used In](#) | [Reorder](#)

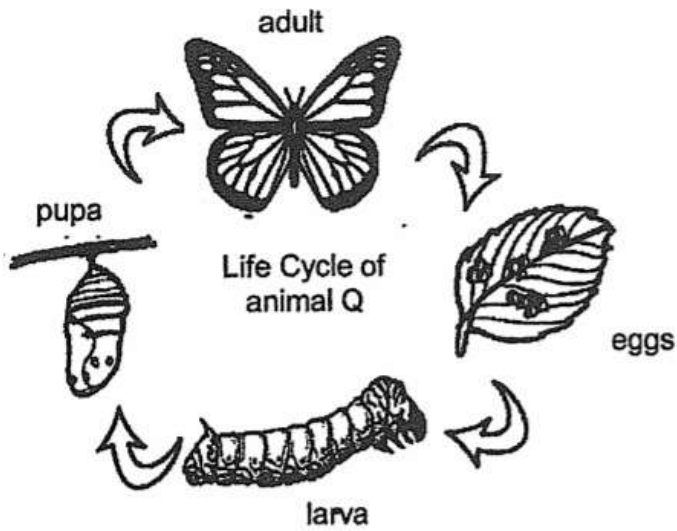
[Remove From Test](#)

Question 9

Primary 3 Science » Primary 3 Science (Term 2)

2 pts

The diagram below shows the life cycle of animal Q.



Which one of the following animals has a similar life cycle to animal Q?

- A) frog
- ✓ B) beetle
- C) chicken
- D) cockroach

Question Type: Multiple Choice
Randomize Answers: No
Date Added: Fri 3rd Apr 2020
Last Modified: N/A
QID#: 19,457,369

[Answers](#) | [Edit](#) | [Duplicate](#) | [Used In](#) | [Reorder](#)

[Remove From Test](#)

Question 10

Primary 3 Science » Primary 3 Science (Term 2)

2 pts

The table below describes the stages of the life cycles of four animals, K, L, M and N.

	animal K	animal L	animal M	animal N
It has a 4-stage life cycle.	✓	✗	✗	✗
The eggs are laid in water.	✓	✓	✓	✗
The young looks like the adult.	✗	✓	✗	✓

A tick (✓) indicates that the description is correct and a cross (✗) indicates that the description is wrong.



Which of the following animal is likely to be a mosquito?

- ✓ A) animal K
- B) animal L
- C) animal M
- D) animal N

Question Type: Multiple Choice
Randomize Answers: No
Date Added: Fri 3rd Apr 2020
Last Modified: N/A
QID#: 19,457,460

[Answers](#) | [Edit](#) | [Duplicate](#) | [Used In](#) | [Reorder](#)

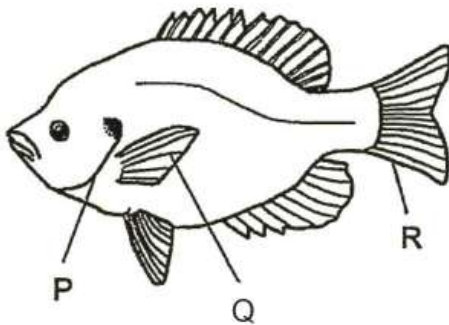
[Remove From Test](#)

Question 11

Primary 3 Science » Primary 3 Science (Term 2)

2 pts

The diagram below shows a fish.



Which of the following identifies the parts of the fish correctly?

	Fin	Tail	Gill
(1)	P	Q	R
(2)	Q	R	P
(3)	R	Q	P
(4)	Q	P	R

- A) 1
 B) 2
 C) 3
 D) 4

Question Type: Multiple Choice
Randomize Answers: No
Date Added: Fri 3rd Apr 2020
Last Modified: N/A
QID#: 19,457,530

[Answers](#) | [Edit](#) | [Duplicate](#) | [Used In](#) | [Reorder](#)

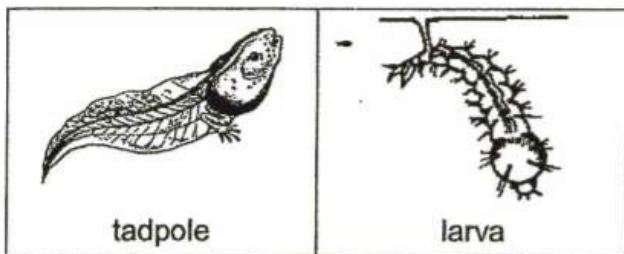
[Remove From Test](#)

Question 12

Primary 3 Science » Primary 3 Science (Term 2)

2 pts

The diagrams below show the young of a frog and a mosquito.



Which one of the following statements below is **not** correct?

- A) Both live in water.
- ✓ B) Both breathe through gills in water.
- C) Both do not resemble their parents.
- D) Both can live on land when turned into adults.

Question Type: Multiple Choice
Randomize Answers: No
Date Added: Sat 4th Apr 2020
Last Modified: N/A
QID#: 19,457,596

[Answers](#) | [Edit](#) | [Duplicate](#) | [Used In](#) | [Reorder](#)

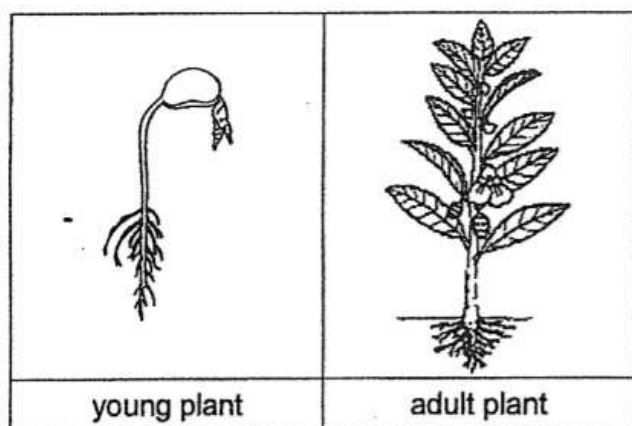
[Remove From Test](#)

Question 13

Primary 3 Science » Primary 3 Science (Term 2)

2 pts

The diagrams below show a young plant and an adult plant.



Which of the following can both the young plant and adult plant do?

- A produce fruits
 - B produce seeds
 - C absorb water through their roots
- A) A only
 - ✓ B) C only
 - C) A and B only
 - D) B and C only

Question Type: Multiple Choice
 Randomize Answers: No
 Date Added: Sat 4th Apr 2020
 Last Modified: N/A
 QID#: 19,457,706

[Answers](#) | [Edit](#) | [Duplicate](#) | [Used In](#) | [Reorder](#)

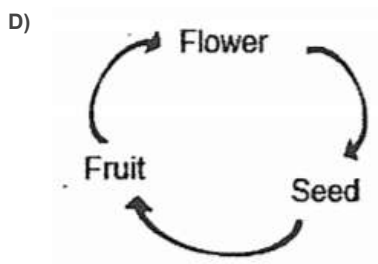
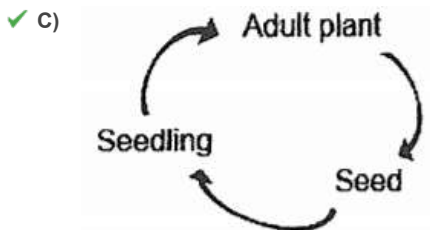
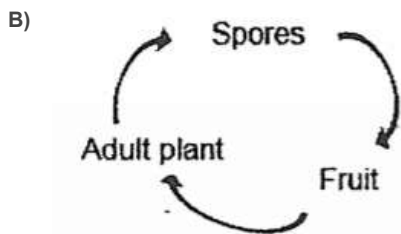
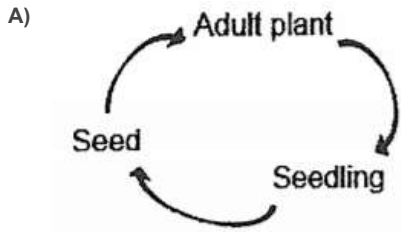
[Remove From Test](#)

Question 14

Primary 3 Science » Primary 3 Science (Term 2)

2 pts

Which one of the following shows the correct life cycle of flowering plants?



Question Type: Multiple Choice
 Randomize Answers: No
 Date Added: Sat 4th Apr 2020
 Last Modified: N/A
 QID#: 19,457,783

[Answers](#) | [Edit](#) | [Duplicate](#) | [Used In](#) | [Reorder](#)

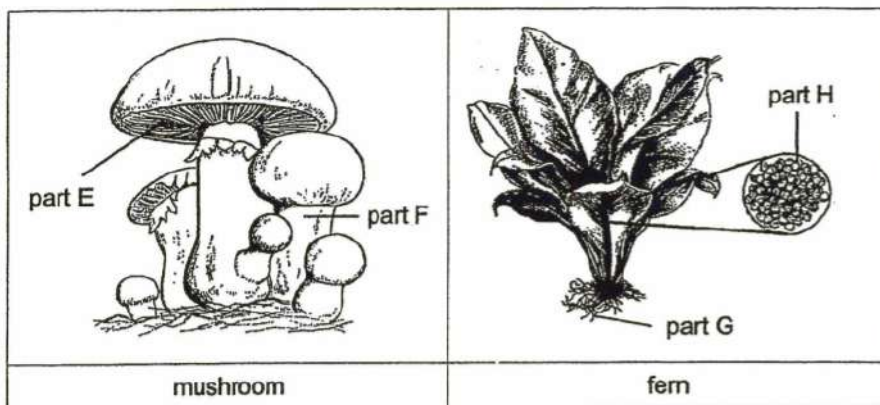
[Remove From Test](#)

Question 15

Primary 3 Science » Primary 3 Science (Term 2)

2 pts

The diagram below shows a mushroom and a fern.



Which parts of the mushroom and fern help them to reproduce?

- A) E & G
- B) F & H
- C) G & F
- ✓ D) H & E

Question Type: Multiple Choice
Randomize Answers: No
Date Added: Sat 4th Apr 2020
Last Modified: N/A
QID#: 19,457,872

[Answers](#) | [Edit](#) | [Duplicate](#) | [Used In](#) | [Reorder](#)

[Remove From Test](#)

Question 16

Primary 3 Science » Primary 3 Science (Term 2)

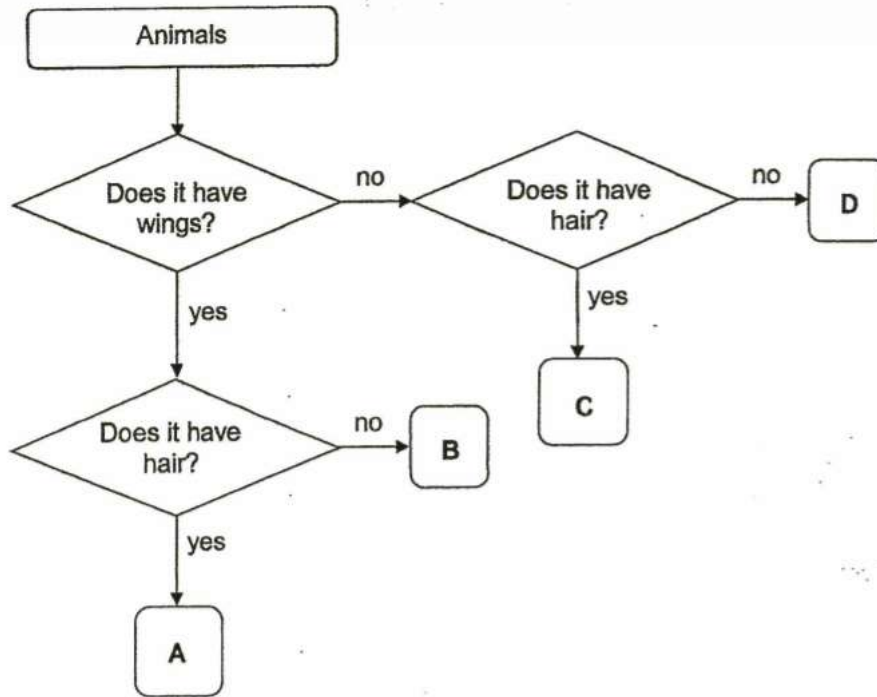
1 pt

Term 2 Paper 2

Section B: (8 marks)

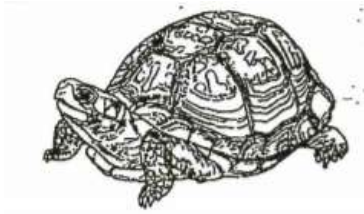
Questions 16 to 24.

Study the flow chart carefully. Questions 16 and 17.



Observe the animal given below.

Which animal A, B, C or D does it match with, based on the description in the flow chart? Choose the correct answer.



a)

- A) Animal A
- B) Animal B
- C) Animal C
- ✓ D) Animal D

Question Type: Multiple Choice
Randomize Answers: No
Date Added: Tue 7th Apr 2020
Last Modified: Sat 11th Apr 2020
QID#: 19,566,365

[Answers](#) | [Edit](#) | [Duplicate](#) | [Used In](#) | [Reorder](#)

[Remove From Test](#)

Question 17

Primary 3 Science » Primary 3 Science (Term 2)

1 pt

Observe the animal given below.

Which animal A, B, C or D does it match with, based on the description in the flow chart? Choose the correct answer.



b)

- ✓ A) Animal A
 B) Animal B
 C) Animal C
 D) Animal D

Question Type: Multiple Choice
Randomize Answers: No
Date Added: Tue 7th Apr 2020
Last Modified: N/A
QID#: 19,566,419

[Answers](#) | [Edit](#) | [Duplicate](#) | [Used In](#) | [Reorder](#)

[Remove From Test](#)

Question 18

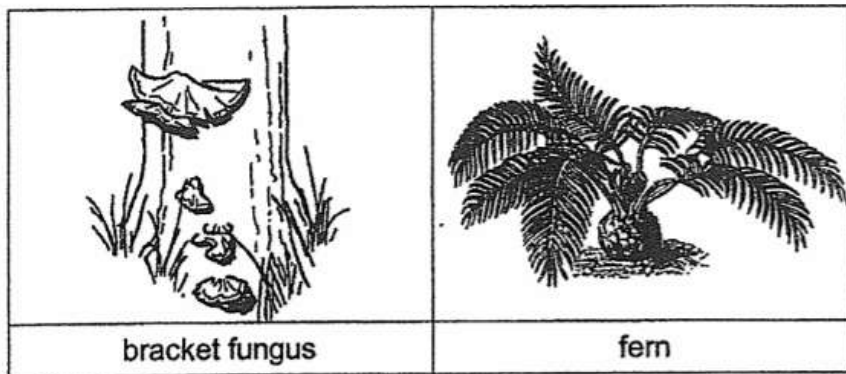
Primary 3 Science » Primary 3 Science (Term 2)

0 pts

Fill in the blanks based on the diagrams shown below.
 Questions 18 and 19.

This question is designed for extended answers that parent/ teacher will have to assign and guide child to attempt after the test has been completed.

Grading: This question type is not graded on this system and will not affect the final score as it was designed in such a way that it requires manual assistance.



a) Both the bracket fungus and fern reproduce by _____.

Question Type: Essay
Date Added: Tue 7th Apr 2020
Last Modified: N/A
QID#: 19,566,856

Correctly answered feedback

spores

Incorrectly answered feedback

spores

Answers | Edit | Duplicate | Used In | Reorder

Remove From Test

Question 19

Primary 3 Science » Primary 3 Science (Term 2)

0 pts

b) The fern makes its own _____.

Question Type: Essay
Date Added: Tue 7th Apr 2020
Last Modified: Sat 11th Apr 2020
QID#: 19,566,874

Correctly answered feedback

food

Incorrectly answered feedback

food

Answers | Edit | Duplicate | Used In | Reorder

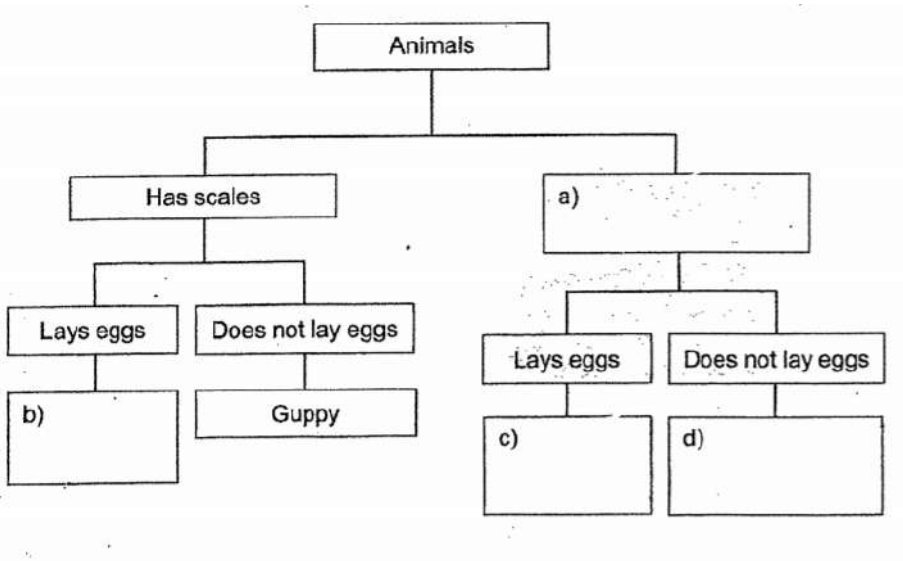
Remove From Test

Question 20

Primary 3 Science » Primary 3 Science (Term 2)

4 pts

The classification table below shows how some animals are classified. Choose the correct answer from the options.



Clue

Match

a)
Points: +1 -0

Does not have scales

b)
Points: +1 -0

Shark

c)
Points: +1 -0

Salamander

d)
Points: +1 -0

Elephant

Incorrect match option

Has hair

Question Type: Matching
Shuffle Mode: Shuffle Matches Only
Date Added: Sat 11th Apr 2020
Last Modified: N/A
QID#: 19,676,505

[Answers](#) | [Edit](#) | [Duplicate](#) | [Used In](#) | [Reorder](#)

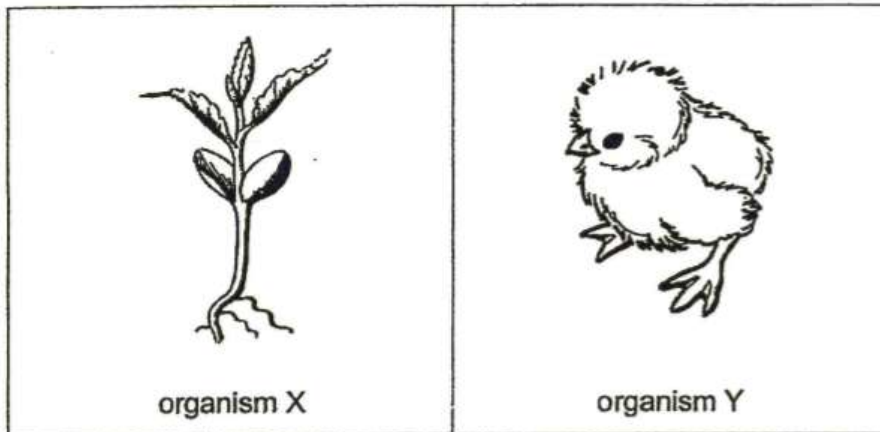
[Remove From Test](#)

Question 21

Primary 3 Science » Primary 3 Science (Term 2)

0.5 pts

Study the two organisms below.



Choose True or False.
Questions 21 to 24.

Organisms X and Y are living things.

- ✓ A) True
B) False

Question Type: True False
Date Added: Sat 11th Apr 2020
Last Modified: N/A
QID#: 19,676,585

[Answers](#) | [Edit](#) | [Duplicate](#) | [Used In](#) | [Reorder](#)

[Remove From Test](#)

Question 22

Primary 3 Science » Primary 3 Science (Term 2)

0.5 pts

Organisms X and Y are at their young stages.

- ✓ A) True
B) False

Question Type: True False
Date Added: Sat 11th Apr 2020
Last Modified: N/A

QID#: 19,676,590

[Answers](#) | [Edit](#) | [Duplicate](#) | [Used In](#) | [Reorder](#)[Remove From Test](#)

Question 23

Primary 3 Science » Primary 3 Science (Term 2)

0.5 pts

Organisms X and Y can make food.

- A) True
- ✓ B) False

Question Type: True False
Date Added: Sat 11th Apr 2020
Last Modified: N/A
QID#: 19,676,597

[Answers](#) | [Edit](#) | [Duplicate](#) | [Used In](#) | [Reorder](#)[Remove From Test](#)

Question 24

Primary 3 Science » Primary 3 Science (Term 2)

0.5 pts

Organisms X and Y are hatched from their eggs.

- A) True
- ✓ B) False

Question Type: True False
Date Added: Sat 11th Apr 2020
Last Modified: N/A
QID#: 19,676,605

[Answers](#) | [Edit](#) | [Duplicate](#) | [Used In](#) | [Reorder](#)[Remove From Test](#)

Question 25

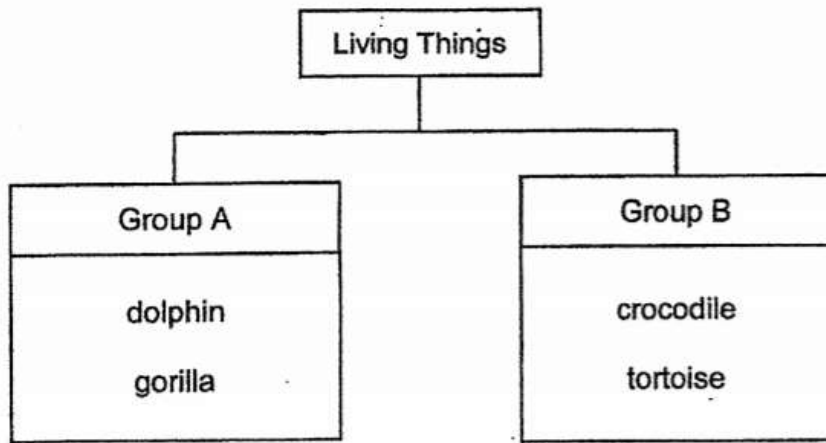
Primary 3 Science » Primary 3 Science (Term 2)

0 pts

Section C:

Type your answers.

Ryan grouped the following things into a classification chart as shown below.



Ryan then found organism X in his garden.

He listed his observations on organism X as shown below.

- moves from place to place
- moves when touched
- lays eggs
- has dry skin covered with scales

Answer the questions 25 and 26

This question is designed for extended answers that parent/ teacher will have to assign and guide child to attempt after the test has been completed.

Grading: This question type is not graded on this system and will not affect the final score as it was designed in such a way that it requires manual assistance.

Based on his observation of organism X, in which group should Ryan place organism X in the classification chart above? Give a reason for your answer.

Group: _____

Reason: _____

Question Type: Essay
Date Added: Sat 11th Apr 2020
Last Modified: Sat 11th Apr 2020
QID#: 19,679,839

Correctly answered feedback

Group: B

Reason: Group A gives birth to young alive while Group B lays eggs and organism X lays eggs.

Incorrectly answered feedback

Group: B

Reason: Group A gives birth to young alive while Group B lays eggs and organism X lays eggs.

[Answers](#) | [Edit](#) | [Duplicate](#) | [Used In](#) | [Reorder](#)

[Remove From Test](#)

Question 26

Primary 3 Science » Primary 3 Science (Term 2)

0 pts

How were the living things grouped?

Give a suitable **heading** for group A and group B.

i) Group A: _____

ii) Group B: _____

Question Type: Essay
Date Added: Sat 11th Apr 2020
Last Modified: N/A
QID#: 19,679,913

Correctly answered feedback

- i) Group A: Give birth to young alive.
 ii) Group B: Lay eggs.

Incorrectly answered feedback

- i) Group A: Give birth to young alive.
 ii) Group B: Lay eggs.

[Answers](#) | [Edit](#) | [Duplicate](#) | [Used In](#) | [Reorder](#)

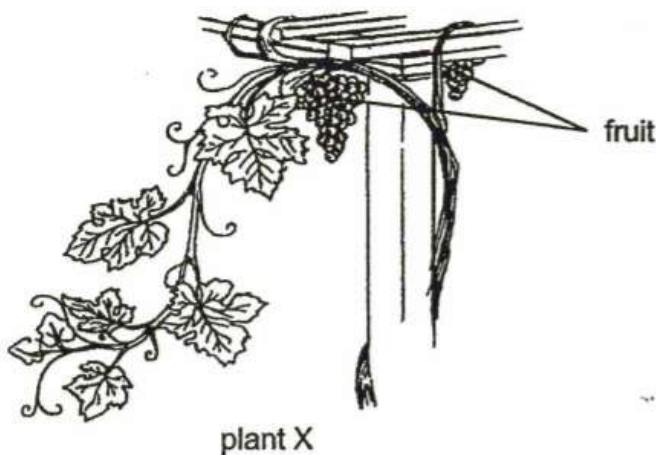
[Remove From Test](#)

Question 27

Primary 3 Science » Primary 3 Science (Term 2)

0 pts

The diagram below shows plant X.



Is plant X a flowering or a non-flowering plant?
 State a reason for your answer based on the information given.

This question is designed for extended answers that parent/ teacher will have to assign and guide child to attempt after the test has been completed.

Grading: This question type is not graded on this system and will not affect the final score as it was designed in such a way that it requires manual assistance.

Question Type: Essay
Date Added: Fri 17th Apr 2020
Last Modified: N/A
QID#: 19,878,531

Correctly answered feedback

Plant X is a flowering plant. Plant X bears fruits.

Incorrectly answered feedback

Plant X is a flowering plant. Plant X bears fruits.

[Answers](#) |
 [Edit](#) |
 [Duplicate](#) |
 [Used In](#) |
 [Reorder](#)

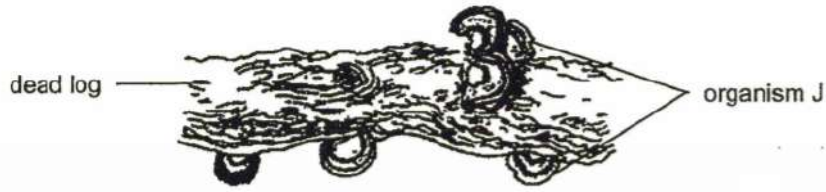
[Remove From Test](#)

Question 28

Primary 3 Science » Primary 3 Science (Term 2)

0 pts

The diagram below shows organism J growing on a dead log as shown below.



State how organism J obtains food to survive.

This question is designed for extended answers that parent/ teacher will have to assign and guide child to attempt after the test has been completed.

Grading: This question type is not graded on this system and will not affect the final score as it was designed in such a way that it requires manual assistance.

Question Type: Essay
Date Added: Fri 17th Apr 2020
Last Modified: Sat 18th Apr 2020
QID#: 19,878,584

Correctly answered feedback

Organism J obtains food from dead log to survive.

Incorrectly answered feedback

Organism J obtains food from dead log to survive.

[Answers](#) |
 [Edit](#) |
 [Duplicate](#) |
 [Used In](#) |
 [Reorder](#)

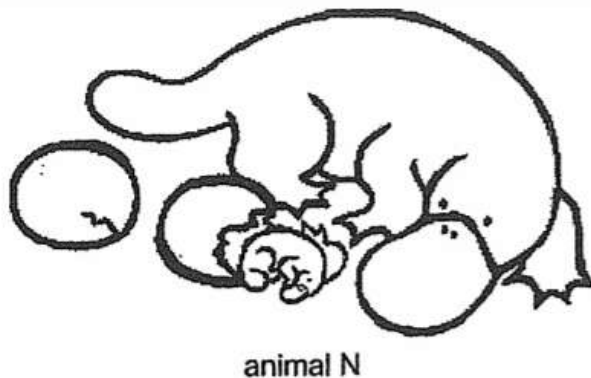
[Remove From Test](#)

Question 29

Primary 3 Science » Primary 3 Science (Term 2)

0 pts

Animal N, shown below, has thick fur on its body and lays eggs. It also feeds its young with its milk.



Questions 29 and 30 are based on this diagram.

This question is designed for extended answers that parent/ teacher will have to assign and guide child to attempt after the test has been completed.

Grading: This question type is not graded on this system and will not affect the final score as it was designed in such a way that it requires manual assistance.

John said that animal N is a mammal. Give 2 reasons why he is correct.

Reason 1: _____

Reason 2: _____

Question Type: Essay
Date Added: Sat 18th Apr 2020
Last Modified: N/A
QID#: 19,878,744

Correctly answered feedback

Reason 1: Animal N has hair on its body.

Reason 2: Animal N feeds its young with its milk.

Incorrectly answered feedback

Reason 1: Animal N has hair on its body.

Reason 2: Animal N feeds its young with its milk.

[Answers](#) | [Edit](#) | [Duplicate](#) | [Used In](#) | [Reorder](#)

[Remove From Test](#)**Question 30**

Primary 3 Science » Primary 3 Science (Term 2)

0 pts

State one characteristic of animal N that is not common in mammals.

Question Type: Essay
Date Added: Sat 18th Apr 2020
Last Modified: N/A
QID#: 19,878,791

Correctly answered feedback

Animal N lays eggs.

Incorrectly answered feedback

Animal N lays eggs.

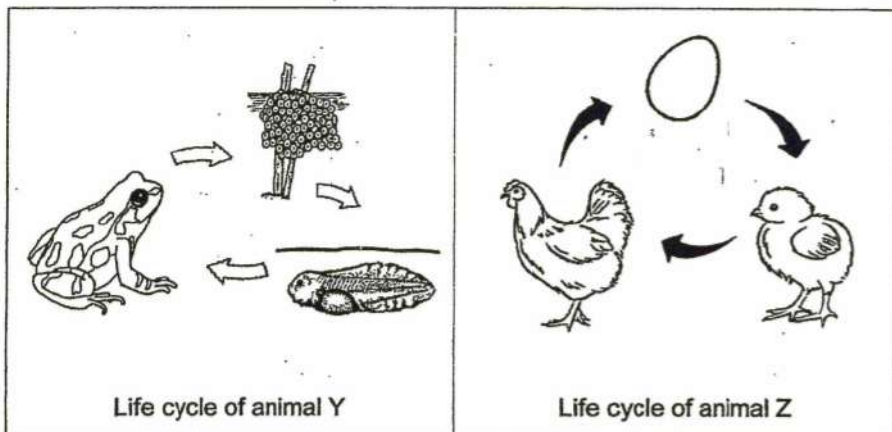
[Answers](#) | [Edit](#) | [Duplicate](#) | [Used In](#) | [Reorder](#)

[Remove From Test](#)**Question 31**

Primary 3 Science » Primary 3 Science (Term 2)

0 pts

Study the life cycles of animals Y and Z below.



Questions 31 and 32 are based on this diagram.

This question is designed for extended answers that parent/ teacher will have to assign and guide child to attempt after the test has been completed.

Grading: This question type is not graded on this system and will not affect the final score as it was designed in such a way that it requires manual assistance.

State the difference between the life cycles of animals Y and Z for the following:

Where eggs are laid:

Question Type: Essay
Date Added: Sat 18th Apr 2020
Last Modified: N/A
QID#: 19,878,886

Correctly answered feedback

Where eggs are laid: The adult of animal Y lays eggs in water while the adult of animal Z lays eggs on land.

Incorrectly answered feedback

Where eggs are laid: The adult of animal Y lays eggs in water while the adult of animal Z lays eggs on land.

[Answers](#) | [Edit](#) | [Duplicate](#) | [Used In](#) | [Reorder](#)

[Remove From Test](#)

Question 32

Primary 3 Science » Primary 3 Science (Term 2)

0 pts

State the similarity between the life cycles of animals Y and Z for the following:

Number of stages:

Question Type: Essay
Date Added: Sat 18th Apr 2020
Last Modified: N/A
QID#: 19,879,272

Correctly answered feedback

Number of stages: Both life cycles of animals Y and Z have three stages.

Incorrectly answered feedback

Number of stages: Both life cycles of animals Y and Z have three stages.

[Answers](#) | [Edit](#) | [Duplicate](#) | [Used In](#) | [Reorder](#)

[Remove From Test](#)